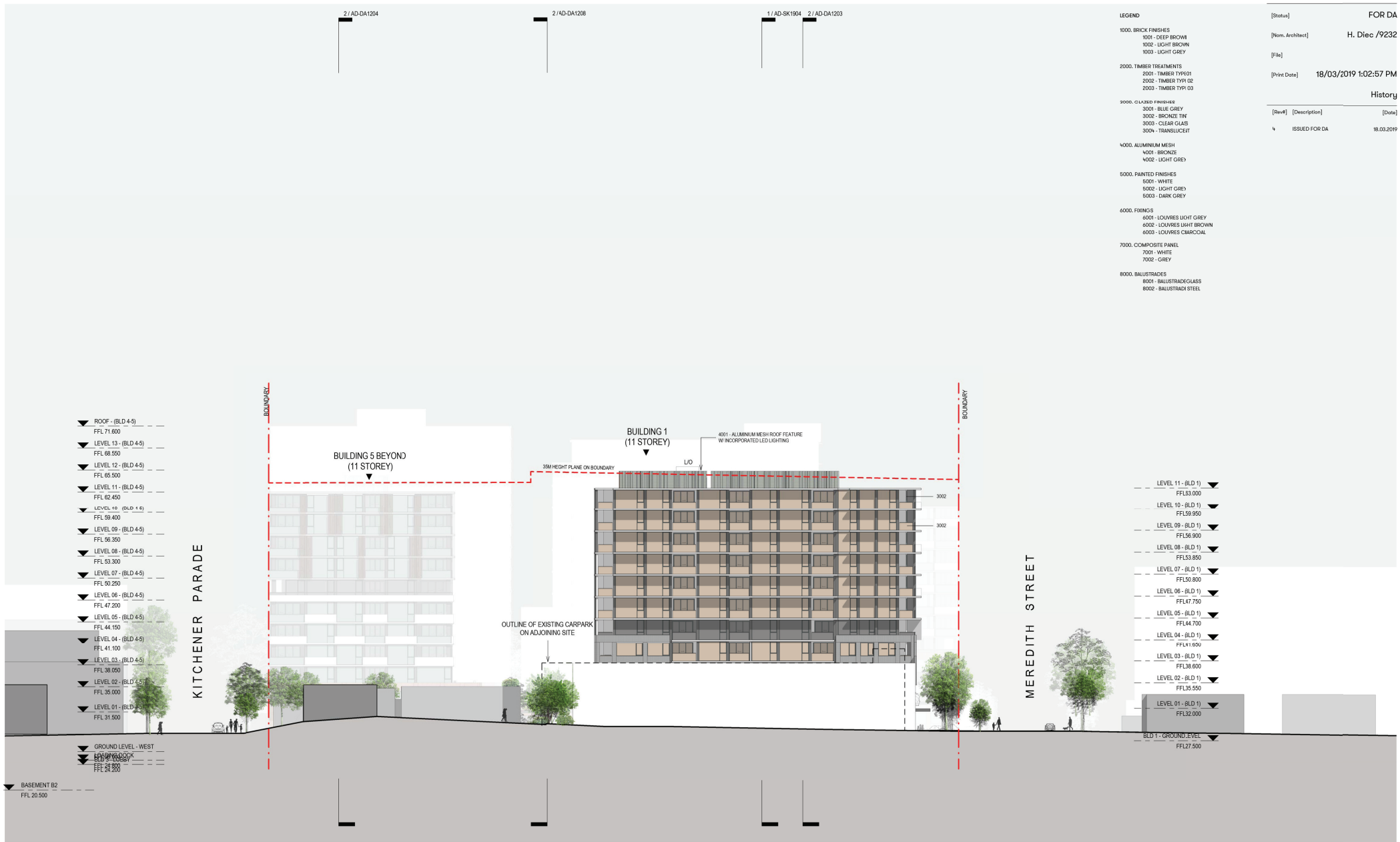




East Elevation - Kitchener Parade



NORTH ELEVATION

LEGEND

1000. BRICK FINISHES  
1001 - DEEP BROWN  
1002 - LIGHT BROWN  
1003 - LIGHT GREY
2000. TIMBER TREATMENTS  
2001 - TIMBER TYP01  
2002 - TIMBER TYP 02  
2003 - TIMBER TYP 03
3000. GLAZED FINISHES  
3001 - BLUE GREY  
3002 - BRONZE TINT  
3003 - CLEAR GLASS  
3004 - TRANSLUCENT
4000. ALUMINIUM MESH  
4001 - BRONZE  
4002 - LIGHT GREY
5000. PAINTED FINISHES  
5001 - WHITE  
5002 - LIGHT GREY  
5003 - DARK GREY
6000. FIXINGS  
6001 - LOUVRES LIGHT GREY  
6002 - LOUVRES LIGHT BROWN  
6003 - LOUVRES CHARCOAL
7000. COMPOSITE PANEL  
7001 - WHITE  
7002 - GREY
8000. BALUSTRADES  
8001 - BALUSTRADGLASS  
8002 - BALUSTRADI STEEL

[Status] FOR DA

[Nom. Architect] H. Diec /9232

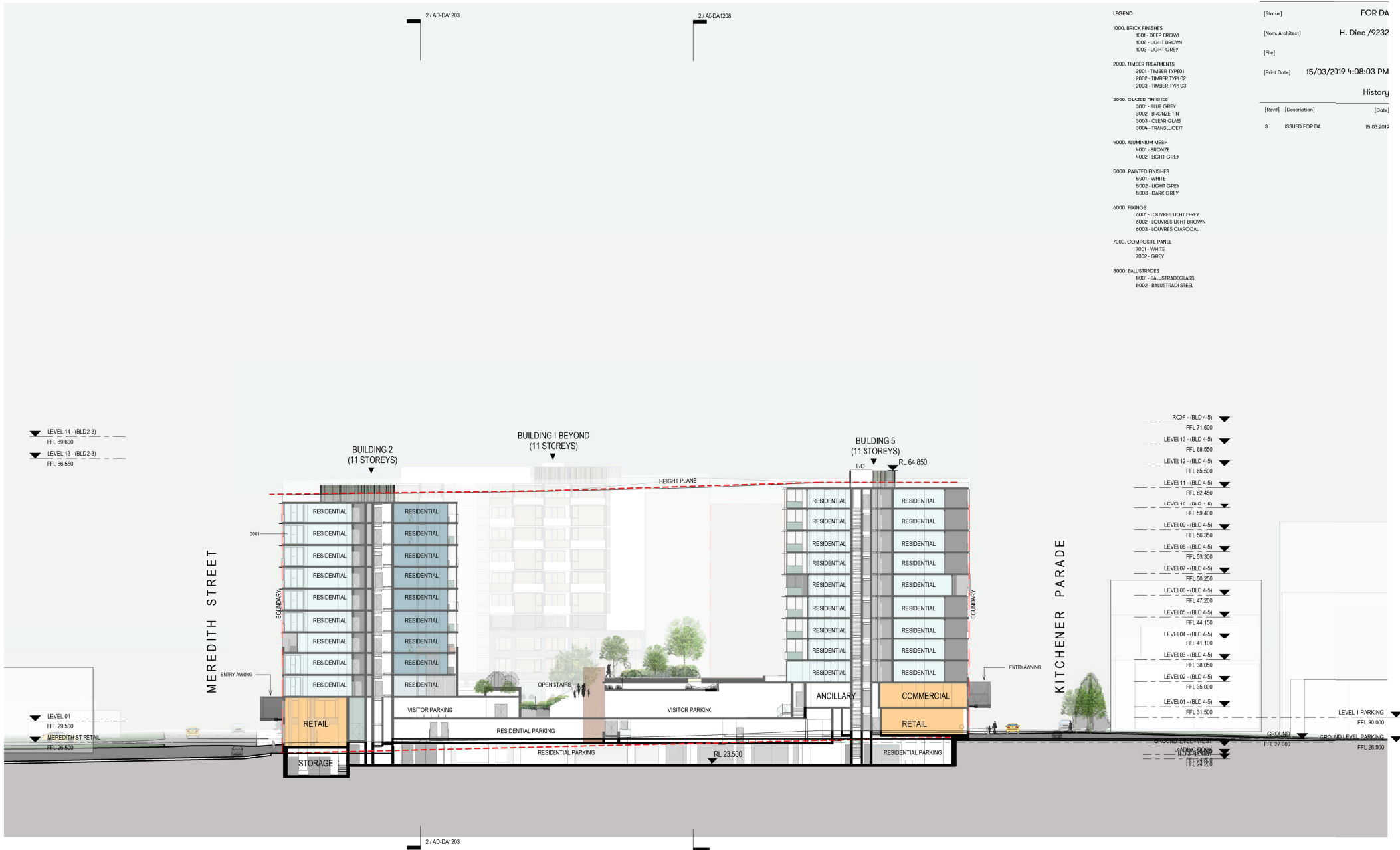
[File]

[Print Date] 18/03/2019 1:02:57 PM

History

[Rev#]	[Description]	[Date]
4	ISSUED FOR DA	18.03.2019

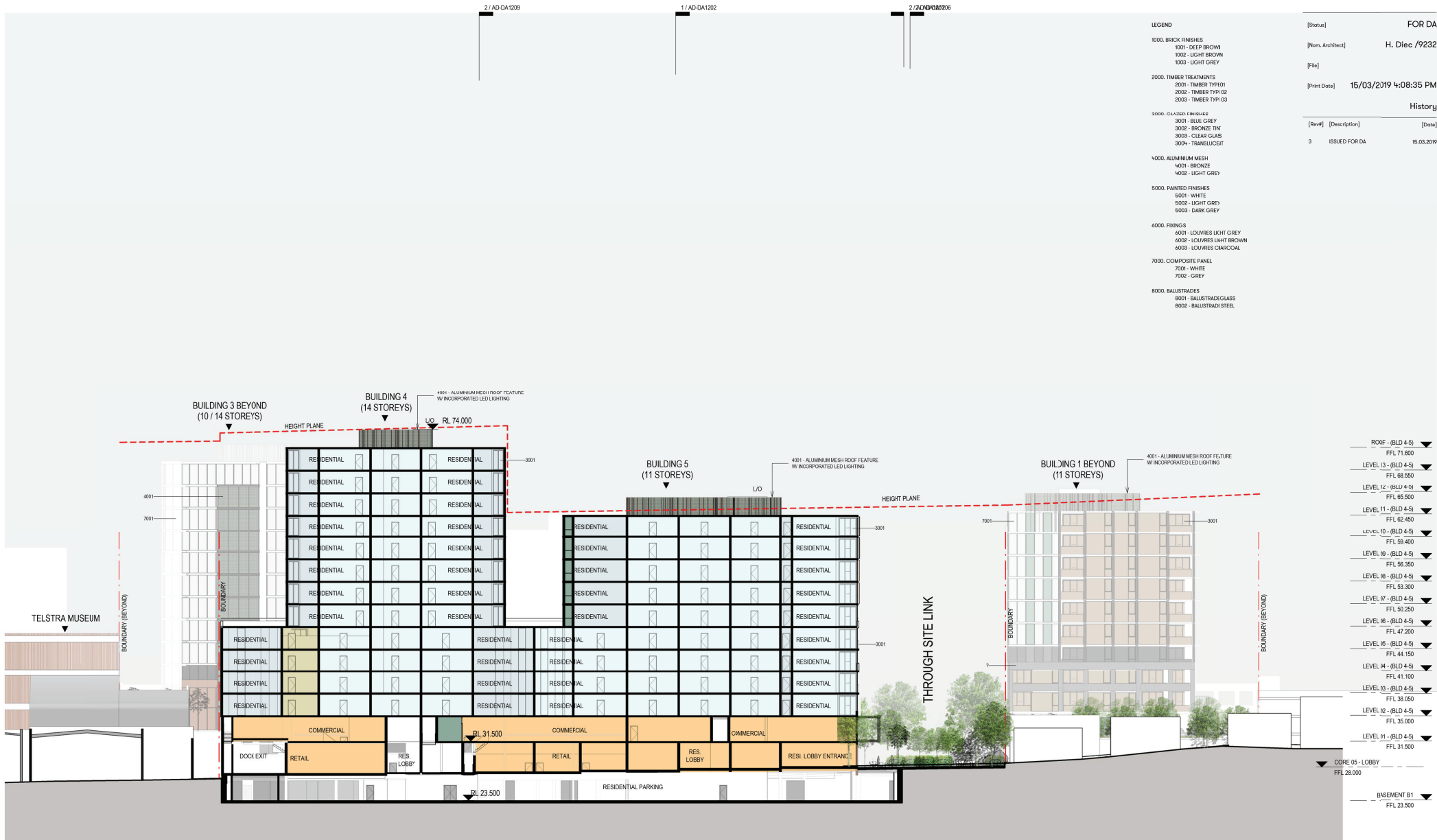




LEGEND		[Status]	FOR DA
1000. BRICK FINISHES	1001 - DEEP BROWN	[Nom. Architect]	H. Diec /9232
	1002 - LIGHT BROWN		
	1003 - LIGHT GREY		
2000. TIMBER TREATMENTS	2001 - TIMBER TYP01	[File]	15/03/2019 4:08:03 PM
	2002 - TIMBER TYP 02		
	2003 - TIMBER TYP 03		
3000. GLAZED FINISHES	3001 - BLUE GREY	[Rev#]	[Description]
	3002 - BRONZE TINT		
	3003 - CLEAR GLASS		
	3004 - TRANSLUCENT		
4000. ALUMINIUM MESH	4001 - BRONZE	3	ISSUED FOR DA
	4002 - LIGHT GREY		
5000. PAINTED FINISHES	5001 - WHITE	[Date]	15.03.2019
	5002 - LIGHT GREY		
	5003 - DARK GREY		
6000. FIXINGS	6001 - LOUVRES LIGHT GREY		
	6002 - LOUVRES LIGHT BROWN		
	6003 - LOUVRES CHARCOAL		
7000. COMPOSITE PANEL	7001 - WHITE		
	7002 - GREY		
8000. BALUSTRADES	8001 - BALUSTRADGLASS		
	8002 - BALUSTRADI STEEL		



SECTION 3



SECTION 4

[Status]	FOR DA	
[Nom, Architect]	H. Diec /9232	
[File]		
[Print Date]	18/03/2019 1:00:48 PM	
History		
[Rev#]	[Description]	[Date]
4	ISSUED FOR DA	18.03.2019



2 / AD-DA1203

2 / AD-DA1208

LEGEND

1000. BRICK FINISHES  
1001 - DEEP BROWN  
1002 - LIGHT BROWN  
1003 - LIGHT GREY
2000. TIMBER TREATMENTS  
2001 - TIMBER TYP1 01  
2002 - TIMBER TYP1 02  
2003 - TIMBER TYP1 03
3000. GLAZED FINISHES  
3001 - BLUE GREY  
3002 - BRONZE TINT  
3003 - CLEAR GLASS  
3004 - TRANSLUCENT
4000. ALUMINIUM MESH  
4001 - BRONZE  
4002 - LIGHT GREY
5000. PAINTED FINISHES  
5001 - WHITE  
5002 - LIGHT GREY  
5003 - DARK GREY
6000. FIXINGS  
6001 - LOUVRES LIGHT GREY  
6002 - LOUVRES LIGHT BROWN  
6003 - LOUVRES CHARCOAL
7000. COMPOSITE PANEL  
7001 - WHITE  
7002 - GREY
8000. BALUSTRADES  
8001 - BALUSTRADE GLASS  
8002 - BALUSTRADE STEEL

[Status] FOR DA

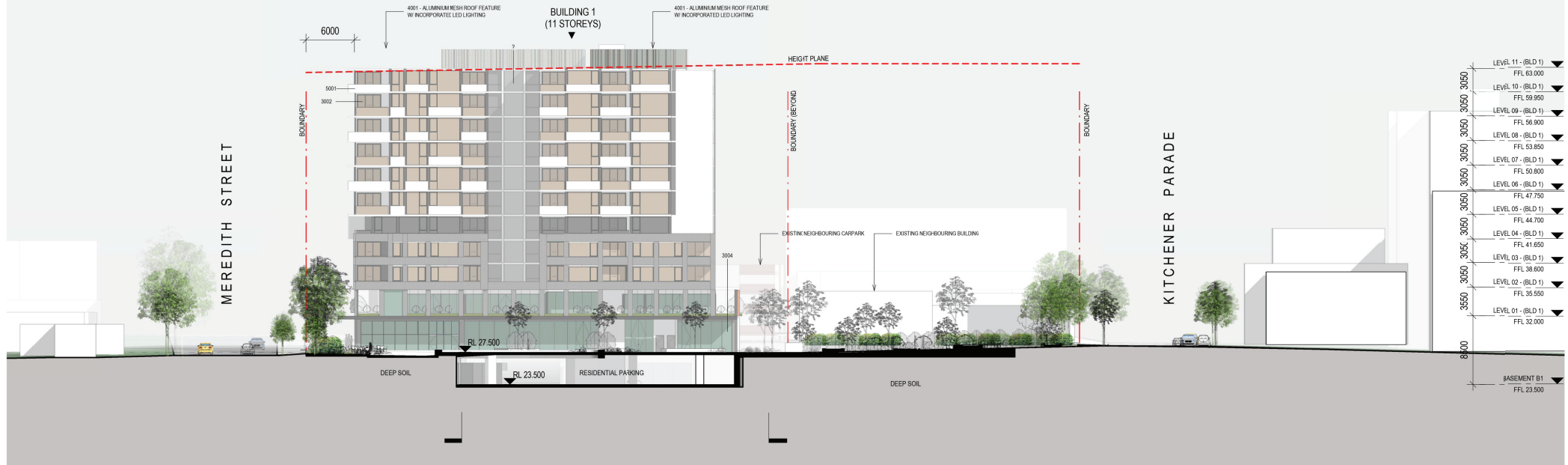
[Nom. Architect] H. Diec / 9232

[File]

[Print Date] 15/03/2019 4:09:16 PM

History

[Rev#]	[Description]	[Date]
3	ISSUED FOR DA	15.03.2019



Section 6 - Through Site Link



Section 7 - Through Site Link

LEGEND			[Status]	FOR DA	
1000. BRICK FINISHES			[Nom. Architect]	H. Diec /9232	
1001 - DEEP BROWN					
1002 - LIGHT BROWN					
1003 - LIGHT GREY			[File]		
2000. TIMBER TREATMENTS			[Print Date]	15/03/2019 4:09:56 PM	
2001 - TIMBER TYP01					
2002 - TIMBER TYP 02					
2003 - TIMBER TYP 03					
3000. CLAZED FINISHES			History		
3001 - BLUE GREY			[Rev#]	[Description]	[Date]
3002 - BRONZE TIN					
3003 - CLEAR GLASS					
3004 - TRANSLUCENT			3	ISSUED FOR DA	15.03.2019
4000. ALUMINIUM MESH					
4001 - BRONZE					
4002 - LIGHT GREY					
5000. PAINTED FINISHES					
5001 - WHITE					
5002 - LIGHT GREY					
5003 - DARK GREY					
6000. FIXINGS					
6001 - LOUVRES LIGHT GREY					
6002 - LOUVRES LIGHT BROWN					
6003 - LOUVRES CHARCOAL					
7000. COMPOSITE PANEL					
7001 - WHITE					
7002 - GREY					
8000. BALUSTRADES					
8001 - BALUSTRADGLASS					
8002 - BALUSTRADI STEEL					



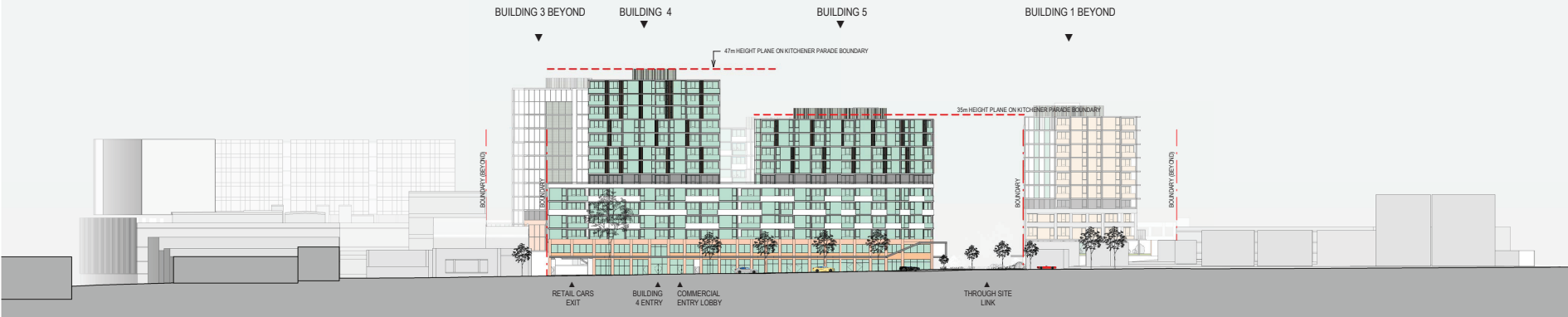
Section 8



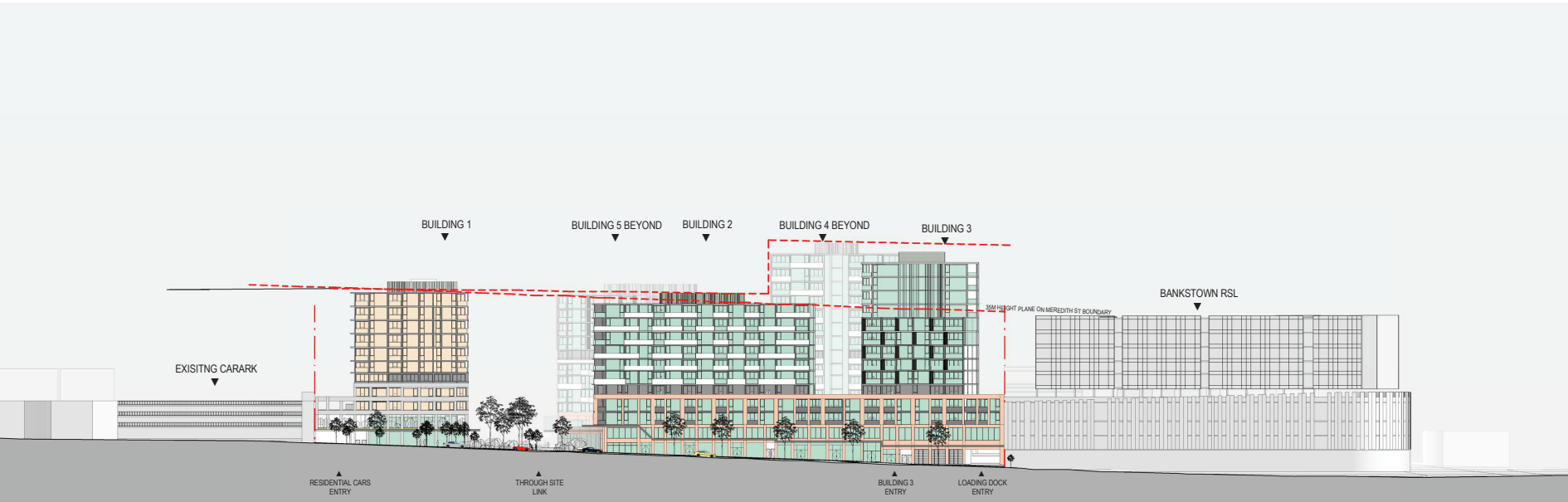
SECTION 9

LEGEND		[Status]	FOR DA
1000. BRICK FINISHES	1001 - DEEP BROWN	[Nom. Architect]	H. Diec /9232
	1002 - LIGHT BROWN		
	1003 - LIGHT GREY		
2000. TIMBER TREATMENTS	2001 - TIMBER TYP01	[File]	15/03/2019 4:10:53 PM
	2002 - TIMBER TYP02		
	2003 - TIMBER TYP03		
3000. CLAZED FINISHES	3001 - BLUE GREY	[Rev#]	[Description]
	3002 - BRONZE TIN		
	3003 - CLEAR GLASS		
	3004 - TRANSLUCENT		
4000. ALUMINIUM MESH	4001 - BRONZE	3	ISSUED FOR DA
	4002 - LIGHT GREY		
5000. PAINTED FINISHES	5001 - WHITE	[Date]	15.03.2019
	5002 - LIGHT GREY		
	5003 - DARK GREY		
6000. FIXINGS	6001 - LOUVRES LIGHT GREY		
	6002 - LOUVRES LIGHT BROWN		
	6003 - LOUVRES CHARCOAL		
7000. COMPOSITE PANEL	7001 - WHITE		
	7002 - GREY		
8000. BALUSTRADES	8001 - BALUSTRADGLASS		
	8002 - BALUSTRADI STEEL		





Street Elevation - Kitchener Parade



Street Elevation - Meredith Street

